

© 2024 RPS Group
 Notes
 1. This drawing has been prepared in accordance with the scope of RPS's appointment with its client and is subject to the terms and conditions of that appointment. RPS accepts no liability for any use of this document other than by its client and only for the purposes for which it was prepared and provided.
 2. If received electronically it is the recipient's responsibility to print to correct scale. Only written dimensions should be used.

- Legend**
- Order Limits
 - 275kV Cable Route
 - Secondary Substation
 - PCS
 - Cable 33 kv Crossings
 - Installation area
 - 250m cable route buffer
 - Installation area 1km buffer

- Northern Drift Formation - Diamicton
- Alluvium - Clay, Silt, Sand and Gravel
- Tufa - Tufa, Calcareous
- Head - Clay, Silt, Sand and Gravel
- Northmoor Sand and Gravel Member - Sand and Gravel
- Northmoor Sand and Gravel Member, Lower/Upper Facet - Sand and Gravel
- River Terrace Deposits, 1-3 - Sand and Gravel
- River Terrace Deposits, 4 - Gravel
- Summertown-Radley Sand and Gravel Member - Sand and Gravel
- Summertown-Radley Sand and Gravel Member, Lower Facet - Sand and Gravel
- Summertown-Radley Sand and Gravel Member, Upper Facet - Sand and Gravel
- Peat - Peat
- Wolvercote Sand and Gravel Member - Sand and Gravel
- Northern Drift Formation - Sand and Gravel
- Hanborough Gravel Member - Sand and Gravel

Rev	Description	By	CB	Date



PHOTOVOLT
DEVELOPMENT PARTNERS



RPS
A TETRA TECH COMPANY

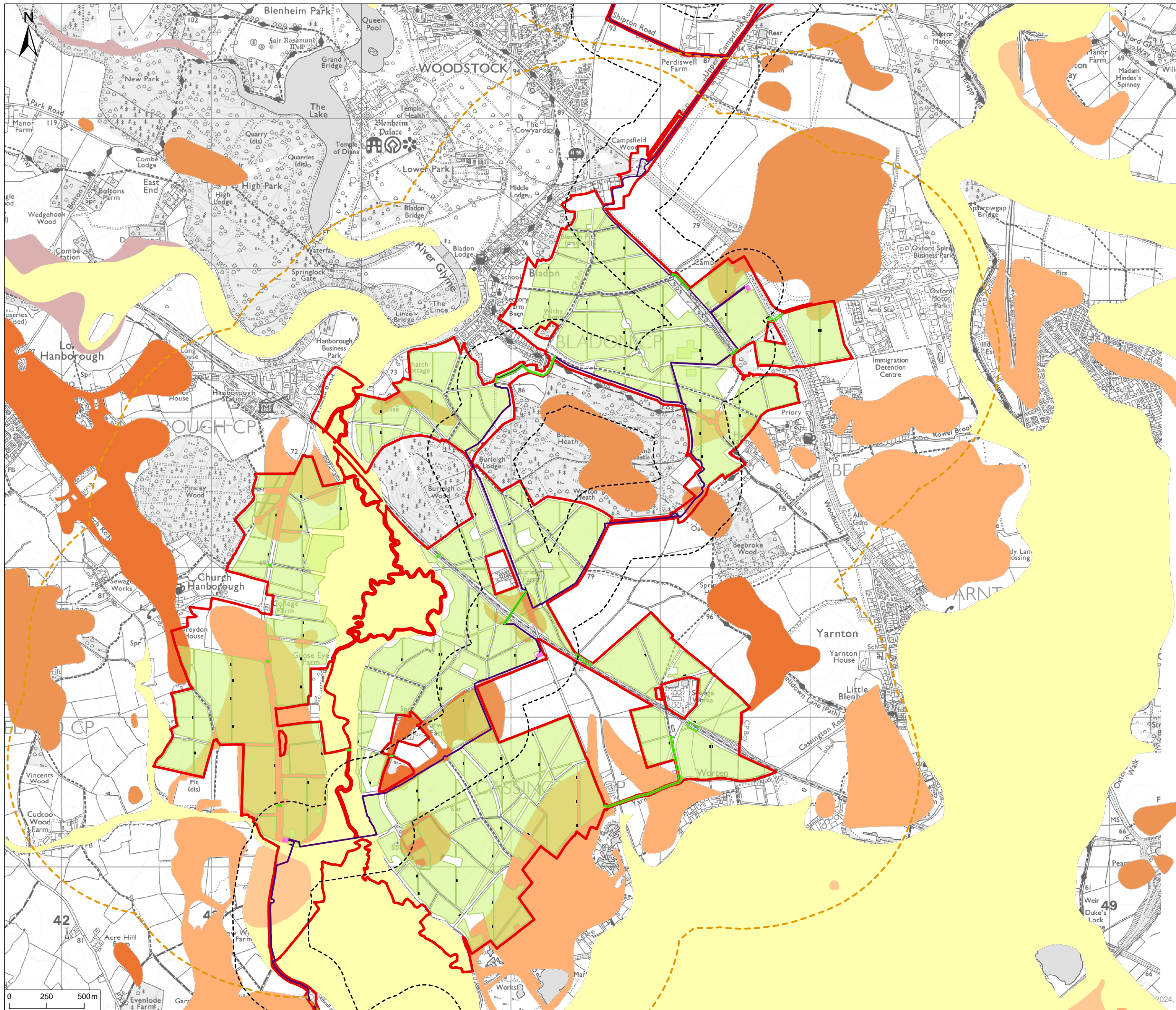
Client PVDP
 Project Botley West Solar Farm
 Title BGS 1:50,000 Superficial Deposits - North

Status **FINAL** Drawn By **JM** PM/Checked By **TJ**
 Drawing Number **EN010147/APP/6.4** Scale @ A3 **1:25,000** Date Created **NOV 2024**

Figure Number **10.7a** Rev **-**

rpsgroup.com
 20 Western Avenue, Milton Park, Abingdon, Oxfordshire, OX14 4SH
 T: +44(0)1235 821 888 E: rps@rpsgroup.com

P:\eur-mpe-02.eur.rpsgroup.com\Projects\12426 Proposed DCO Scale Solar Development 860mwi\Tech\Drawings\12426-0176-02.aprx



© 2024 RPS Group
 Notes
 1. This drawing has been prepared in accordance with the scope of RPS's appointment with its client and is subject to the terms and conditions of that appointment. RPS accepts no liability for any use of this document other than by its client and only for the purposes for which it was prepared and provided.
 2. If received electronically it is the recipients responsibility to print to correct scale. Only written dimensions should be used.

- Legend**
- Order Limits
 - 275kV Cable Route
 - Secondary Substation
 - PCS
 - Cable 33 kv Crossings
 - Installation area
 - 250m cable route buffer
 - Installation area 1km buffer

- Northern Drift Formation - Diamicton
- Alluvium - Clay, Silt, Sand and Gravel
- Tufa - Tufa, Calcareous
- Head - Clay, Silt, Sand and Gravel
- Northmoor Sand and Gravel Member - Sand and Gravel
- Northmoor Sand and Gravel Member, Lower/Upper Facet - Sand and Gravel
- River Terrace Deposits, 1-3 - Sand and Gravel
- River Terrace Deposits, 4 - Gravel
- Summertown-Radley Sand and Gravel Member - Sand and Gravel
- Summertown-Radley Sand and Gravel Member, Lower Facet - Sand and Gravel
- Summertown-Radley Sand and Gravel Member, Upper Facet - Sand and Gravel
- Peat - Peat
- Wolvercote Sand and Gravel Member - Sand and Gravel
- Northern Drift Formation - Sand and Gravel
- Hanborough Gravel Member - Sand and Gravel

Rev	Description	By	CB	Date



PHOTOVOLT
DEVELOPMENT PARTNERS



RPS
A TETRA TECH COMPANY

Client PVDP

Project Botley West Solar Farm

Title BGS 1:50,000 Superficial Deposits - Central

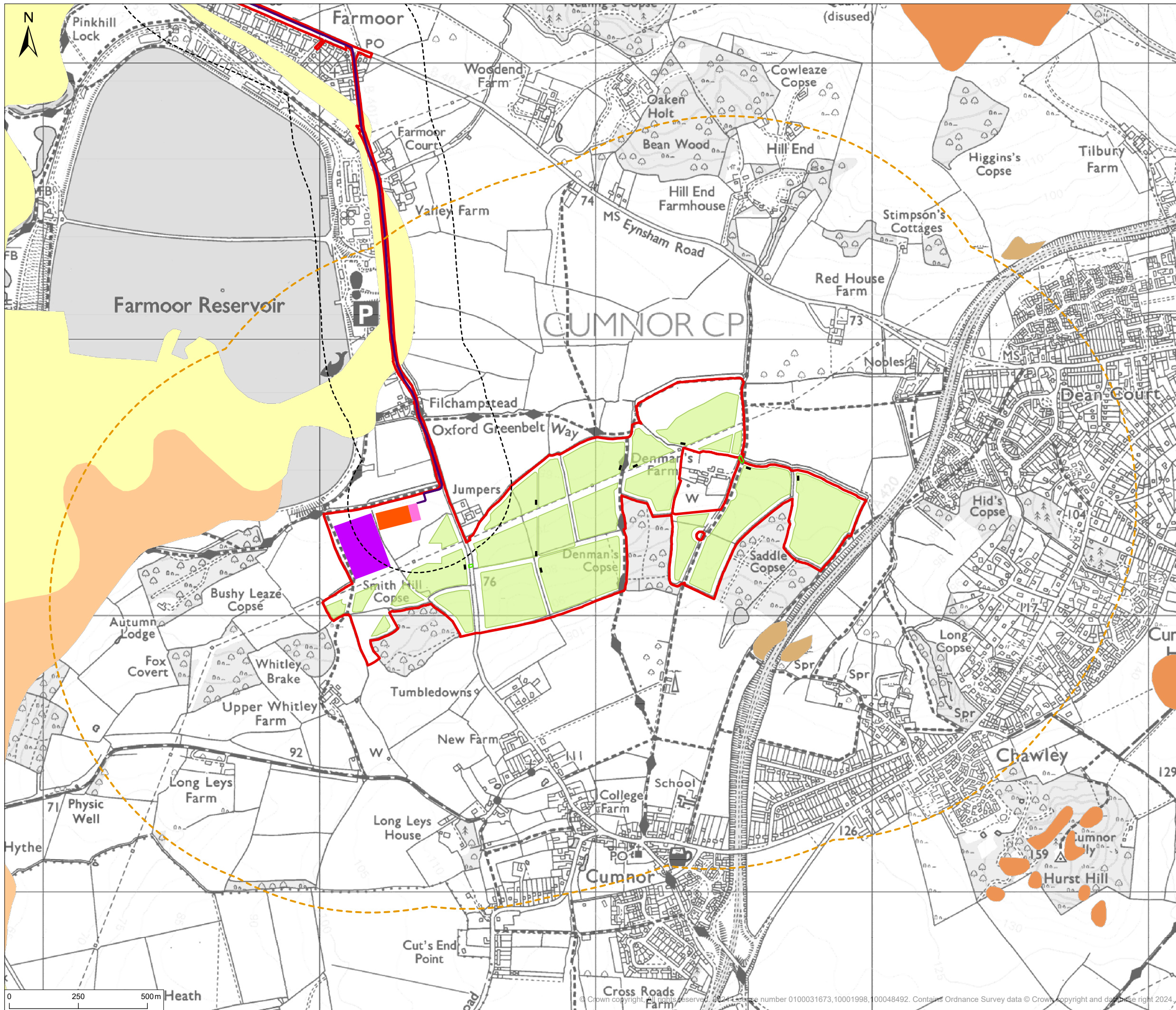
Status **FINAL** Drawn By JM PM/Checked By TJ

Drawing Number EN010147/APP/6.4 Scale @ A3 1:24,000 Date Created NOV 2024

Figure Number **10.7b** Rev -

rpsgroup.com
 20 Western Avenue, Milton Park, Abingdon, Oxfordshire, OX14 4SH
 T: +44(0)1235 821 888 E: rps@rpsgroup.com

P:\eur-mpfs-02.eur.rpsgroup.com\Projects\12426 Proposed DCO Scale Solar Development 860mm\Tech\Drawings\12426-0176-02.aprx



© 2024 RPS Group
 Notes
 1. This drawing has been prepared in accordance with the scope of RPS's appointment with its client and is subject to the terms and conditions of that appointment. RPS accepts no liability for any use of this document other than by its client and only for the purposes for which it was prepared and provided.
 2. If received electronically it is the recipients responsibility to print to correct scale. Only written dimensions should be used.

- Legend**
- Order Limits
 - 275kV Cable Route
 - Secondary Substation
 - Main Substation
 - NG Substation
 - PCS
 - Cable 33 kv Crossings
 - Installation area
 - 250m cable route buffer
 - Installation area 1km buffer

- Northern Drift Formation - Diamicton
- Alluvium - Clay, Silt, Sand and Gravel
- Tufa - Tufa, Calcareous
- Head - Clay, Silt, Sand and Gravel
- Northmoor Sand and Gravel Member - Sand and Gravel
- Northmoor Sand and Gravel Member, Lower/Upper Facet - Sand and Gravel
- River Terrace Deposits, 1-3 - Sand and Gravel
- River Terrace Deposits, 4 - Gravel
- Summertown-Radley Sand and Gravel Member - Sand and Gravel
- Summertown-Radley Sand and Gravel Member, Lower Facet - Sand and Gravel
- Summertown-Radley Sand and Gravel Member, Upper Facet - Sand and Gravel
- Peat - Peat
- Wolvercote Sand and Gravel Member - Sand and Gravel
- Northern Drift Formation - Sand and Gravel
- Hanborough Gravel Member - Sand and Gravel

Rev	Description	By	CB	Date



PHOTOVOLT
DEVELOPMENT PARTNERS



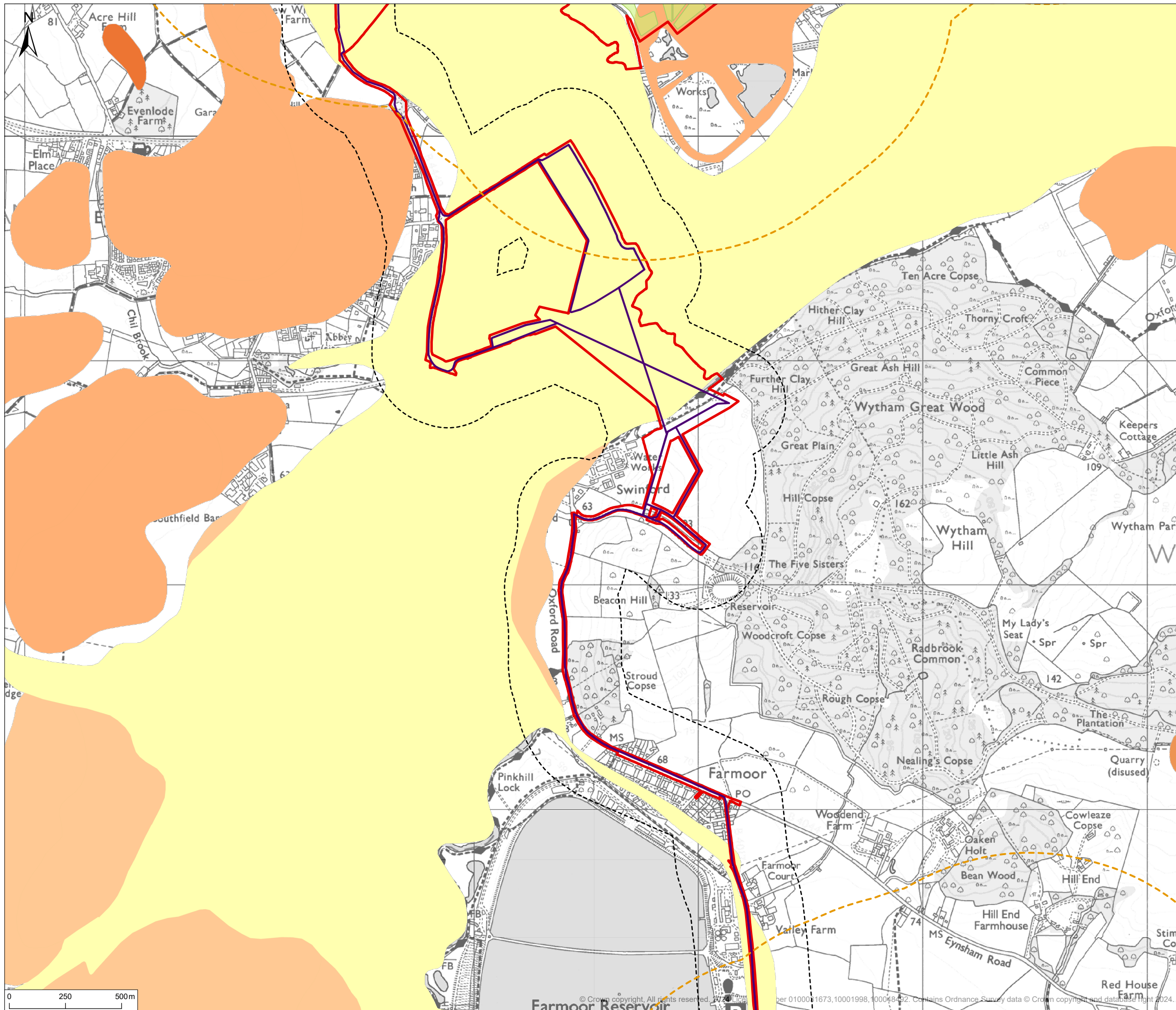
RPS
A TETRA TECH COMPANY

Client PVDP
 Project Botley West Solar Farm
 Title BGS 1:50,000 Superficial Deposits - South

Status **FINAL** Drawn By JM PM/Checked By TJ
 Drawing Number EN010147/APP/6.4 Scale @ A3 1:13,000 Date Created NOV 2024
 Figure Number **10.7c** Rev -

rpsgroup.com
 20 Western Avenue, Milton Park, Abingdon, Oxfordshire, OX14 4SH
 T: +44(0)1235 821 888 E: rps@rpsgroup.com

P:\eur-mpfs-02.eur.rpsgroup.com\Projects\12426 Proposed DCO Scale Solar Development 860mw\Tech\Drawings\12426-0176-02.aprx



© 2024 RPS Group
 Notes
 1. This drawing has been prepared in accordance with the scope of RPS's appointment with its client and is subject to the terms and conditions of that appointment. RPS accepts no liability for any use of this document other than by its client and only for the purposes for which it was prepared and provided.
 2. If received electronically it is the recipients responsibility to print to correct scale. Only written dimensions should be used.

- Legend**
- ▬ Order Limits
 - ▬ 275kV Cable Route
 - Installation area
 - 250m cable route buffer
 - Installation area 1km buffer

- Northern Drift Formation - Diamicton
- Alluvium - Clay, Silt, Sand and Gravel
- Tufa - Tufa, Calcareous
- Head - Clay, Silt, Sand and Gravel
- Northmoor Sand and Gravel Member - Sand and Gravel
- Northmoor Sand and Gravel Member, Lower/Upper Facet - Sand and Gravel
- River Terrace Deposits, 1-3 - Sand and Gravel
- River Terrace Deposits, 4 - Gravel
- Summertown-Radley Sand and Gravel Member - Sand and Gravel
- Summertown-Radley Sand and Gravel Member, Lower Facet - Sand and Gravel
- Summertown-Radley Sand and Gravel Member, Upper Facet - Sand and Gravel
- Peat - Peat
- Wolvercote Sand and Gravel Member - Sand and Gravel
- Northern Drift Formation - Sand and Gravel
- Hanborough Gravel Member - Sand and Gravel

Rev	Description	By	CB	Date



PHOTOVOLT
DEVELOPMENT PARTNERS



RPS
A TETRA TECH COMPANY

Client	PVDP		
Project	Botley West Solar Farm		
Title	BGS 1:50,000 Superficial Deposits - Cable Route		
Status	Drawn By	PM/Checked By	
FINAL	JM	TJ	
Drawing Number	Scale @ A3	Date Created	
EN010147/APP/6.4	1:16,000	NOV 2024	
Figure Number	Rev		
10.7d			-
<p>rpsgroup.com 20 Western Avenue, Milton Park, Abingdon, Oxfordshire, OX14 4SH T: +44(0)1235 821 888 E: rpsxo@rpsgroup.com</p>			

P:\eur-mpfs-02.eur.rpsgroup.com\Projects\12426 Proposed DCO Scale Solar Development 860mw\Tech\Drawings\12426-0176-02.aprx